

MS 2172

SUMMER 2012

NEW SEATING
NEW WORK SURFACES
NEW FLOORING with ASBESDOS REMOVAL

Replacement of historic fibreglass bucket seats with fixed tables and swing-arm seating. The 34.25" deep tiers required the use of narrower tables (12") and slim profile seating (Sedia Ply). The new seats allow movement and the new work areas are much larger, and allowing for tests in the classroom (small tablets often prevented this usage). Capacity was increased by full usage of space at the back, allowing the addition of 2 designated accessible areas at the front.



AFTER



BEFORE

<http://www.osm.utoronto.ca>

UPGRADE

NEW
Capacity 142 (+2)
Sedia M60 swing-away
Table 12 x 24" (per station)
Swivel, rotate and tilt seat
Wide seat pan
Two 3'x5' accessible station areas
71 floorposts
VCT flooring

OLD
Capacity 140
Fibreglass bucket + tablet
Tablet 12 x 12"
Fixed seat
Bucket seat
No accessible stations
140 floorposts
Asbestos flooring



AFTER

BEFORE

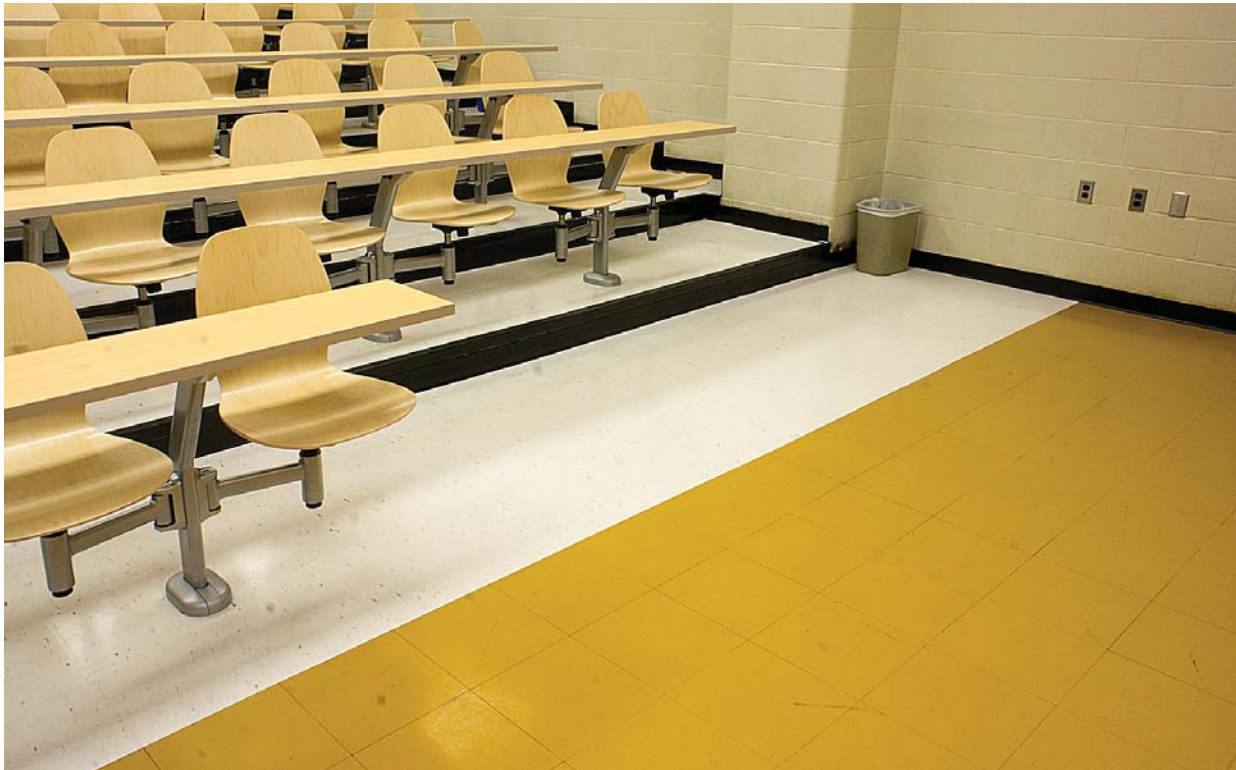
Asbestos flooring in need of replacement

ACCESSIBILITY

NEW

Open area for Accessible Furniture:
Steelcase Airtouch height-adjustable tables
Steelcase Leap fully adjustable seating

2 Areas 3'x5', not obstructing aisle



ACCESSIBLE AREA

OLD

No space allocated for accessibility



ADJUSTABLE FURNITURE

SS 2111

SUMMER 2012

NEW SEATING
RECONFIGURABLE IN ROWS OR GROUPS

In conjunction with LM 123, SS 2111 is a test bed for regular classroom use of wheeled seating with oversize tablets

Instructions can use the space in group, seminar or lecture format

Users can rapidly change room layout



All Photos Copyright OSM Univers

AFTER

BEFORE

<http://www.osm.utoronto.ca>

NEW
Capacity 40
Wide seatpan
Swivel and Height Adjust
Wheeled for reconfiguration
Tablet 12" x 22"

OLD
Capacity 60 (too much for room size)
Narrow bucket
No movement or adjustability
Ganged in rows
Tablet 11" x 11"

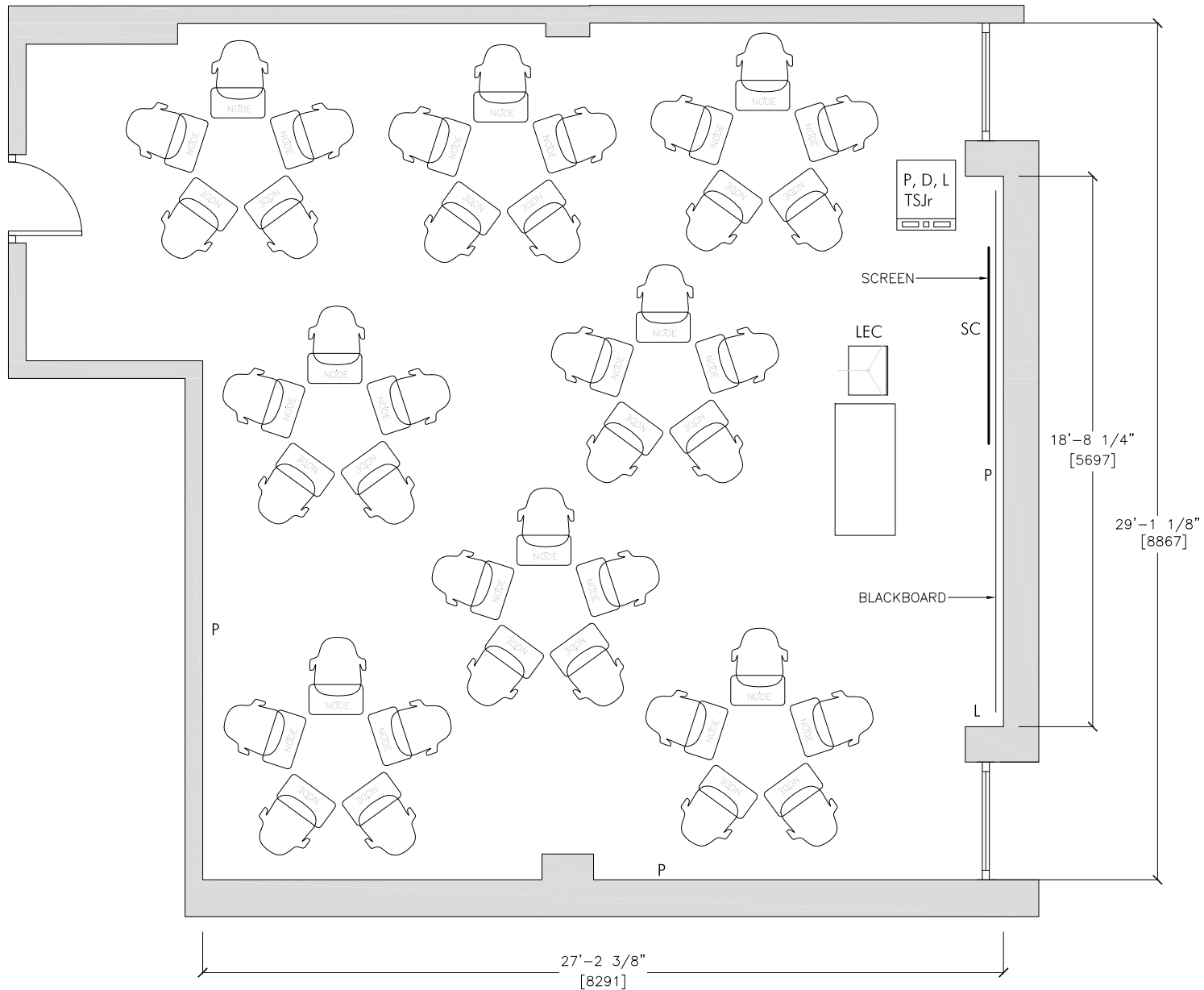


NEW

OLD SEATING

IN ROWS

40 in groups of 5



SS 2111

MOVABLE "NODE" SEATING
WITH LARGE TABLETS

P POWER
D DATA
L LIGHTSWITCH
SC SCREEN CONTROL

TSJr TEACHING STN. JR
LEC PORTABLE LECTERN

ROOM HAS CEILING DATA
PROJECTOR & SPEAKERS

PROJECT

DATE Oct 2012

DRAWING Burl Crone, M.Arch
burl.crone@utoronto.ca
416 - 978 - 8613



UNIVERSITY of TORONTO
Office of Space Management
www.osm.utoronto.ca

DRAWINGS BY OSM ARE SCHWARTZ AND HAVE NOT
BEEN SIGNED BY A REGISTERED ARCHITECT